



RHL6F-ICAT

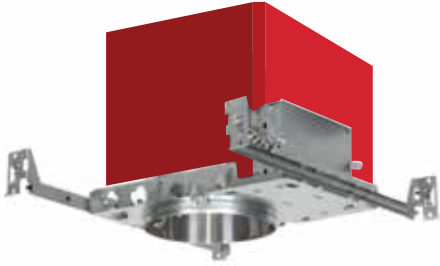
6" IC FIRE RATED AIR TIGHT
NEW CONSTRUCTION LED HOUSING

PROJECT: _____

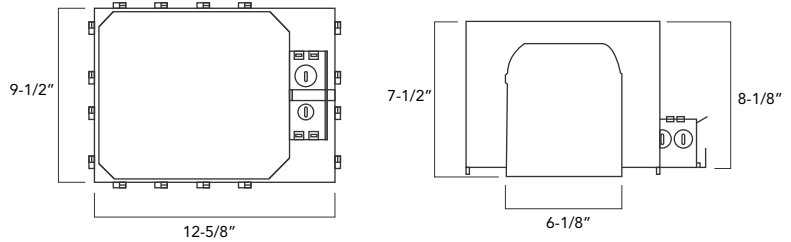
MODEL #: _____

LOCATION: _____

CONTACT: _____



DIMENSIONS



USE OF PRODUCT

The RHL6F-ICAT is the ideal product for general purpose recessed LED housing with the added protection of UL fire rated for residential, commercial, hospitality, health care, restaurant and retail applications. UL fire rated up to 2 hours with double wall fixture incorporates a non-combustible fiber insulation to prevent flames, toxic gases and ignition gases. This product is compatible with the Versatrim RFL6 Series in round or square in various baffle, reflector, and trim ring color selections to achieve a particular look.

CONSTRUCTION

- Fire rated up to 2 hours and double walled
- Use in insulated ceiling and non-insulated ceilings.
- Quick connect provided
- 13-5/8" to 25" bar hangers with captive nails and alignment foot
- Housing adjusts from 1-1/2" to accommodate various ceiling thickness
- UL listed for damp location
- UL listed for wet locations

HOUSING

Die formed 22 gauge galvanized steel construction.

JUNCTION BOX

- Listed for through branch circuit wiring.
- Contains one 1-1/8", one 1/2", three 7/8" knockouts.

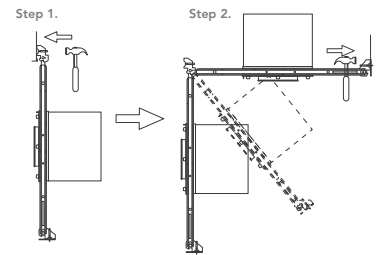
BAR HANGER

- Pre-installed real nail easily installs in regular lumber.
- Bar hangers are adjustable from 13-5/8" to 25" and can be repositioned 90° on plaster frame.
- Bendable swivel bar for easy installation.

LABELS/COMPLIANCE

- cULus Listed for damp location
- cULus Listed for wet location
- cULus Listed for feed through
- Certified under ASTM-E283 for air tight construction

INSTALLATION BY SWIVEL BAR HANGER



ORDERING INFO

RHL6F-ICAT

Series

RHL6F-ICAT - 6" IC fire rated air-tight new construction LED housing



www.rayonlighting.com
info@rayonlighting.com

tel: 323.446.2626
fax: 323.446.2606

Specification and product availability
subject to change without notice

04/18