



RULC

ADJUSTABLE LED UNDER CABINET
120-277V; 0-10V

The RULC Adjustable LED Under Cabinet Light offers customizable lighting (2700K–5000K), works with 120–277V systems, and features 0–10V dimming. It has a 40-degree tilt, 1-inch depth for discreet installation, and an antimicrobial finish to reduce bacteria growth.

RULC

ADJUSTABLE LED UNDERCABINET
120-277V; 0-10V

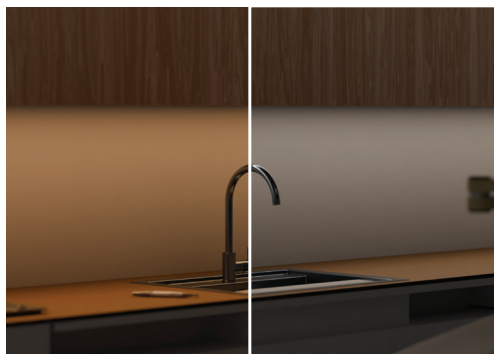


ADJUSTABLE

Adjustable lens enables easy light direction with a 40° tilt.

CONSTRUCTION

Housing constructed of aluminum with polycarbonate lens.



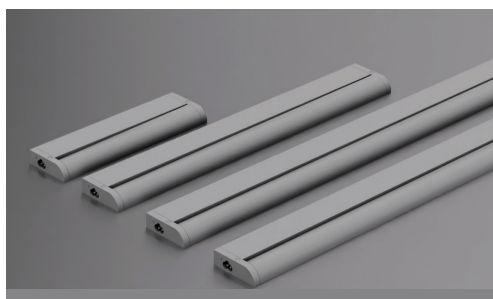
ALL-IN-ONE COLOR TEMPERATURE SELECTABLE

Allows for easy control between 2700K, 3000K, 3500K, 4000K, 5000K color temperature with a simple switch.



LED DRIVER

Integral 120–277V; 0–10V dimmable driver



LENGTH OPTIONS

Available in 12", 24", 36", and 48" lengths.



ANTI-MICROBIAL FINISH

The antimicrobial finish makes this an ideal fixture for healthcare applications.



MOTION SENSOR W/ BUILT-IN PIR

Activate automatically as you approach, offering hands-free convenience in busy work areas.



CONNECTIVITY

End-to-end connectors allow fixtures to be linked in a seamless, continuous row.



COMPACT DESIGN

The slim 1" profile permits fixture to be discreetly concealed in a variety of applications.



Refer to rayonlighting.com for complete model no., specification sheets, and IES files

