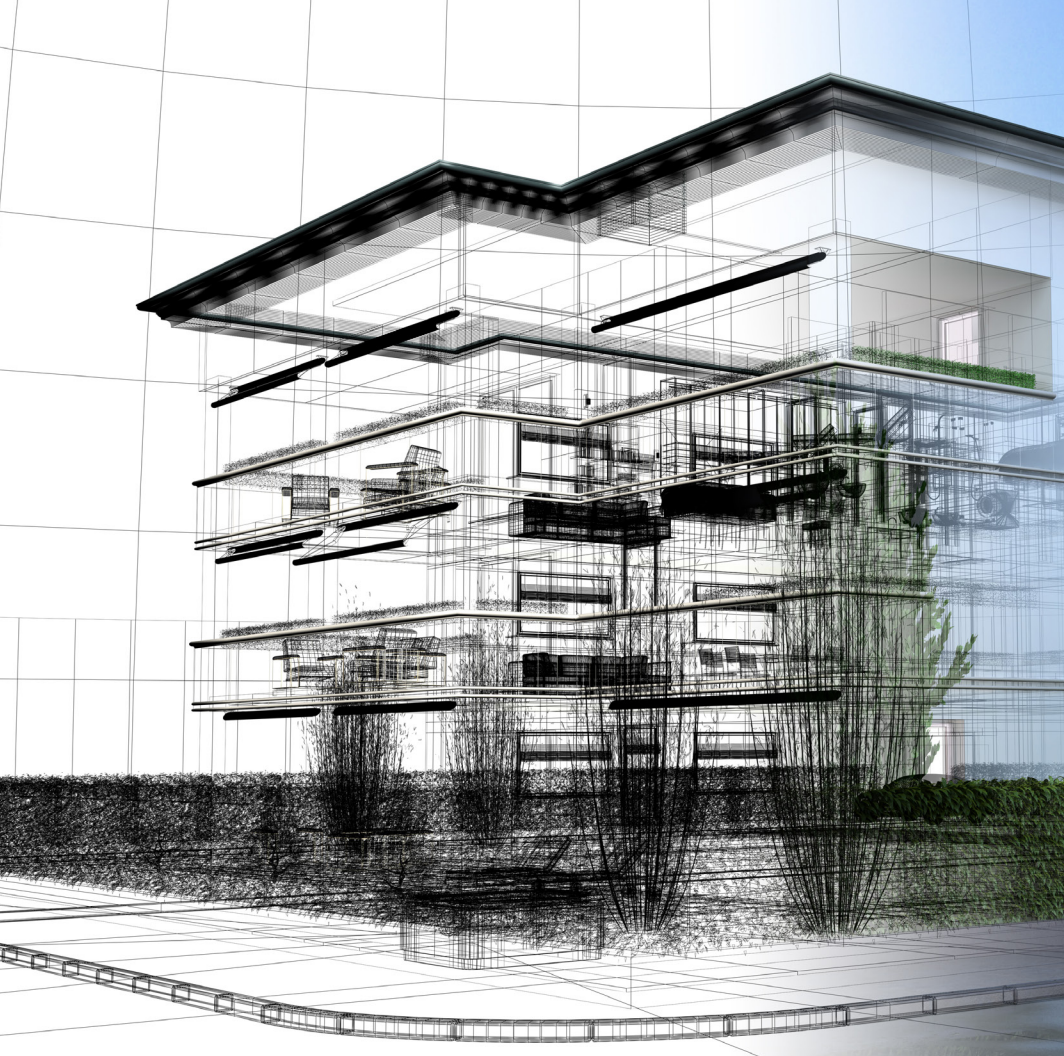


# MULTIFAMILY SOLUTION GUIDE





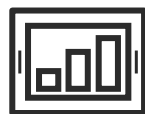


akoya  
BOCA WEST





ONE SIZE  
**DOES NOT**  
FIT ALL!



Performance



Budget



Availability

Performance, budget, and availability collectively play a key role in fixture specification and installation of a multifamily project.

Rayon Lighting offers a tiered solution to streamline your next project, keeping the specifier and contractor in mind.



|  |    |
|--|----|
| Lobby and Common Spaces.....                             | 6  |
| Corridors.....   | 8  |
| Residential Units(JA8 Listed).....                       | 10 |
| Surface Mounted Solutions for Closets.....               | 12 |
| Kitchen Under Cabinet.....                               | 14 |
| Specifier Benefits: Design Tips and Guidelines.....      | 16 |
| Contractor Benefits: Simplifying Orders and Install..... | 17 |



# LOBBY AND COMMON SPACES



**LUMEN RANGE (DELIVERED)**  
975 - 4000 lm

**COLOR TEMPERATURE**  
Available in 2700K, 3000K, 3500K, 4000K, Warm-Dim & Tunable White

**DIMMING**  
**INTELLIGENT DRIVE**  
ELV (120V), Traic (120V), 0-10V (120V-277V)



**CONTOUR/FLANGE TYPE**  
Available in Round & Square (Flange, Flangless plaster/Milwork)

**EMERGENCY BATTERY**  
Optional emergency battery available for a minimum of 90 minutes with integral or remote test switch.

**INTERCHANGEABLE**  
Trim, Filters, Optical Distribution can be easily modified in the field.



**LUMEN RANGE (DELIVERED)**  
1025 - 4000 lm

**COLOR TEMPERATURE**  
Available in 2700K, 3000K, 3500K, 4000K, Warm-Dim & Tunable White  
Coming soon March, 2021

**DIMMING**  
**INTELLIGENT DRIVE**  
ELV (120V), Traic (120V), 0-10V (120V-277V)



**CONTOUR/FLANGE TYPE**  
Available in Round (Flange)

**EMERGENCY BATTERY**  
Optional emergency battery available for a minimum of 90 minutes with integral or remote test switch.

**INTERCHANGEABLE**  
Trim, Filters, Optical Distribution can be easily modified in the field.



**LUMEN RANGE (DELIVERED)**  
LS1 (1500, 1750, 2000 lm)  
LS2 (2340, 3000, 3570 lm)  
LS3 (4000, 4500, 5100 lm)

**COLOR TEMPERATURE SELECTABLE**  
Color temperature may be easily modified in field between 3000K, 3500K, 4000K.

**DIMMING**  
0-10V Dimming (120V-277V)



**CONTOUR/FLANGE**  
Available in Round (Flange)

**EMERGENCY BATTERY**  
Optional emergency battery available for a minimum of 90 minutes with integral or remote test switch.



**LUMEN PACKAGE**  
DOWNLIGHT 800, 1100 lm  
ADJUSTABLE 900 lm  
PULL DOWN 830 lm

**COLOR TEMPERATURE**  
2700K, 3000K, 3500K, 4000K, Warm-Dim

**DIMMING**  
TRIAC/ELV 120V  
0-10V Dimming (120V-277V)



**CONTOUR**  
Available in Round & Square

**EMERGENCY BATTERY**  
Optional emergency battery with up to 90 minute illumination time. 800 delivered lumens only

**INTERCHANGEABLE**  
Reflector/Baffle and Trim can be easily modified in the field.



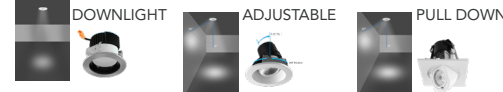


# CORRIDORS

## VERSATRIM



### APERTURE TYPE



### LUMEN RANGE (DELIVERED)

| DOWNLIGHT    | ADJUSTABLE | PULL DOWN |
|--------------|------------|-----------|
| 800, 1100 lm | 900 lm     | 830 lm    |

### COLOR TEMPERATURE

Available in 2700K, 3000K, 3500K, 4000K, Warm-Dim

### DIMMING

|                   |                   |                 |
|-------------------|-------------------|-----------------|
| TRIAC/ELV<br>120V | 0-10V<br>120-277V | LUTRON. eldoLED |
|-------------------|-------------------|-----------------|

### HOUSING TYPE



### CONTOUR

Round or Square (Versatrim, Versatrim Adjustable, Pull Down)

### EMERGENCY BATTERY

Optional emergency battery with up to 90 minute illumination time. 800 delivered lumens only

### INTERCHANGEABLE

Reflector/Baffle and Trim can be easily modified in the field.



## BUILDERS PLUS RESIDENTIAL



### APERTURE TYPE



### LUMEN RANGE (DELIVERED)

| 4"      | 4"     | 6"     |
|---------|--------|--------|
| 1000 lm | 715 lm | 875 lm |

### COLOR TEMPERATURE SELECTABLE

Color temperature may be easily modified in field between 2700K, 3000K, 3500K.

### DIMMING

|                   |
|-------------------|
| TRIAC/ELV<br>120V |
|-------------------|

### HOUSING TYPE



### CONTOUR

Round (4" Builders Plus, 6" Builders Plus)  
Square (4" Builders Plus, 1100 lm)



## BUILDERS PLUS SURFACE MOUNT



### APERTURE TYPE



### LUMEN RANGE (DELIVERED)

1000 lm

### COLOR TEMPERATURE SELECTABLE

Color temperature may be easily modified in field between 2700K, 3000K, 3500K.

### DIMMING

|                   |               |
|-------------------|---------------|
| TRIAC/ELV<br>120V | 0-10V<br>277V |
|-------------------|---------------|

### HOUSING TYPE



### CONTOUR

Available in round

### EMERGENCY BATTERY

Optional emergency battery available for Triac/ELV (120V) version for a minimum of 90 minutes. 350lm delivered at 3.6 watts

### INTERCHANGEABLE

Optional back box allows for fixture height to be equivalent from the ceiling





## RESIDENTIAL UNITS



### VERSATRIM



#### APERTURE TYPE



#### LUMEN RANGE (DELIVERED)

| DOWNLIGHT    | ADJUSTABLE | PULL DOWN |
|--------------|------------|-----------|
| 800, 1100 lm | 900 lm     | 830 lm    |

#### COLOR TEMPERATURE

Available in 2700K, 3000K, 3500K, 4000K, Warm-Dim

#### DIMMING

|                   |                   |        |         |
|-------------------|-------------------|--------|---------|
| TRIAC/ELV<br>120V | 0-10V<br>120-277V | LUTRON | elcoLED |
|-------------------|-------------------|--------|---------|

#### HOUSING TYPE



#### CONTOUR

Round or Square (Versatrim, Versatrim Adjustable, Pull Down)

#### EMERGENCY BATTERY

Optional emergency battery with up to 90 minute illumination time. 800 delivered lumens only

#### INTERCHANGEABLE

Reflector/Baffle and Trim can be easily modified in the field.

### BUILDERS PLUS RESIDENTIAL



#### APERTURE TYPE



#### LUMEN RANGE (DELIVERED)

| 4"      | 4"     | 6"     |
|---------|--------|--------|
| 1000 lm | 715 lm | 875 lm |

#### COLOR TEMPERATURE SELECTABLE

Color temperature may be easily modified in field between 2700K, 3000K, 3500K.

#### DIMMING

|                   |
|-------------------|
| TRIAC/ELV<br>120V |
|-------------------|

#### HOUSING TYPE



#### CONTOUR

Round (4" Builders Plus, 6" Builders Plus)  
Square (4" Builders Plus, 1100 lm)



# CLOSETS



## SURFACE MOUNT



### APERTURE TYPE



### LUMEN RANGE (DELIVERED)

1090 lm

### COLOR TEMPERATURE SELECTABLE

Color temperature may be easily modified in field between 2700K, 3000K, 3500K.

### COLOR RENDERING INDEX

CRI 90+

### DIMMING

TRIAC  
120V

## BUILDERS PLUS SURFACE MOUNT



### APERTURE TYPE



### LUMEN RANGE (DELIVERED)

1000 lm

### COLOR TEMPERATURE SELECTABLE

Color temperature may be easily modified in field between 2700K, 3000K, 3500K.

### COLOR RENDERING INDEX

CRI 90+

### DIMMING

TRIAC  
120V      0-10V  
277V

### EMERGENCY BATTERY



Optional emergency battery available for Triac/ELV (120V) for a minimum of 90 minutes. 350lm delivered lumens at 3.6 watts

### EMPTY BACK BOX



Optional back box allows for fixture height to be equivalent from the ceiling



# KITCHEN UNDER CABINET



## UNDERCABINET



11", 14", 22", 29", 36", 48"

INTEGRAL 120V  
DIMMABLE DRIVER

### LUMEN PACKAGE

| 11"    | 14"    | 22"    | 29"    | 36"     | 48"     |
|--------|--------|--------|--------|---------|---------|
| 270 lm | 386 lm | 548 lm | 741 lm | 1130 lm | 1430 lm |

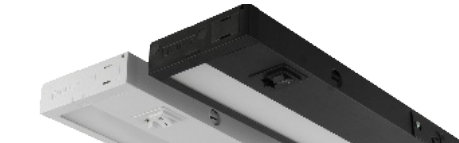
Integral 120V dimmable driver standard.

### COLOR TEMPERATURE SELECTABLE



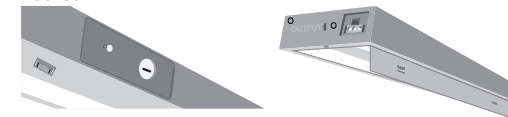
Color temperature may be easily modified in field between 2700K (Warm White), 3000K (Cool White), 3500K (Daylight White)

### FINISH



Available in White, Black

### ACCESS



### BASIC ACCESSORIES INCLUDED



Plastic washer



Captive screws



End to end connector



On/Off locker switch



3/8" Diecast Outlet



Wire connector

### OPTIONAL ACCESSORIES



Power cord



Linkable connector with wire (Available in 5 different lengths)

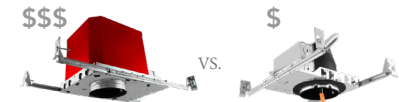


Junction Box



# SPECIFIER BENEFITS:

## DESIGN TIPS AND GUIDELINES



**SPECIFYING FIRE RATED HOUSINGS VS. STANDARD HOUSINGS**  
Multifamily applications may require fire rated housings to meet strict codes, however, these type housings are not required throughout the entire scope of the project. Consider the following scenario where savings are significant where fire rated housings are specified in areas where code requires, such as "common areas" (please check your local jurisdiction for any variances) versus "all areas."

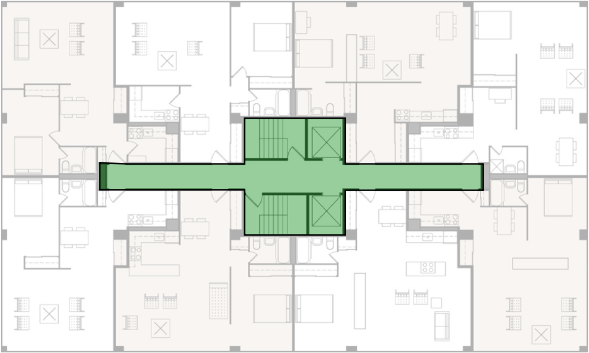


**ALTERNATE DESIGN APPROACH IN FIRE RATED APPLICATIONS FOR ADDED COST SAVINGS**  
Another method to save costs over the scope of the project is to specify a surface mount luminaire instead of a fixture that utilizes a fire rated housing. Surface mounted luminaires may be much more cost effective with respect to material and labor costs.



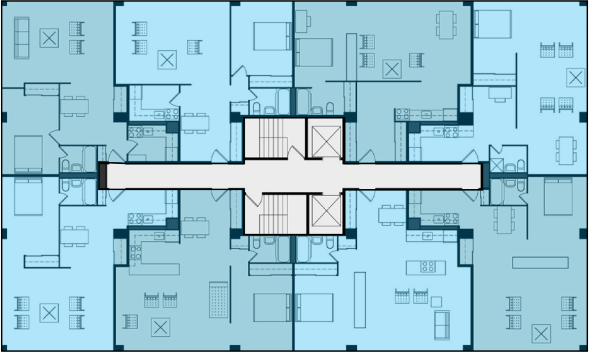
**UTILIZATION OF 0-10V VS. TRIAC/ELV DRIVERS FOR ADDED COST SAVINGS**  
The use of a fixture with a 0-10V driver is typical when it comes to meeting higher dimming standards and controls compatibility. These requirements are typically required in "common areas" of a multifamily project as opposed to the units. The following layout will illustrate significant savings when specifying a 0-10V fixture in "common areas" and the utilization of a Triac/ELV fixture within the units. This approach will save significant costs to the lighting scope of the project.

### COMMON AREAS



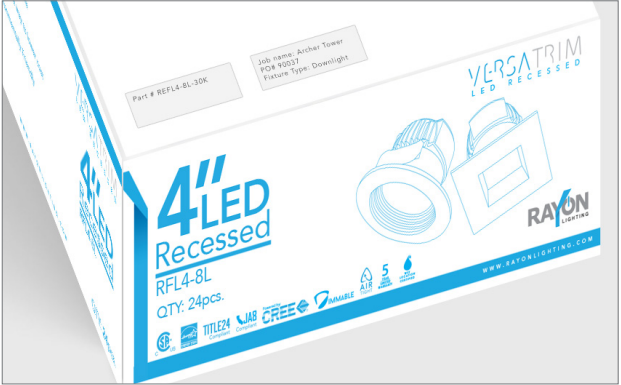
Common areas may include recreation facilities, outdoor space, parking, landscaping, fences, laundry rooms and all other jointly used space.

### OTHER AREA



# CONTRACTOR BENEFITS:

## SIMPLIFYING ORDERS AND INSTALL



**LABELING REQUIREMENTS**  
Projects may have many different fixture types. Please inform Rayon Lighting of specific labeling instructions prior to shipping in order to streamline the project without items being lost or misplaced on site.



**MODIFICATIONS**  
Relieve your labor costs and save time in the field by allowing Rayon Lighting to carry the burden of modifications prior to fixtures being shipped. With fabrication and assembly capabilities, Rayon Lighting may assist with modifications of our fixtures including but not limited mounting/framing accessories per your specific needs.

|                         |  | PRIME |    |    | VERSA<br>COMMERCIAL |    | BUILDERS PLUS<br>COMMERCIAL |    |    |     | VERSATRIM<br>0-10V DIMMING |    |    |
|-------------------------|--|-------|----|----|---------------------|----|-----------------------------|----|----|-----|----------------------------|----|----|
|                         |  | 3"    | 4" | 6" | 4"                  | 6" | 4"                          | 6" | 8" | 10" | 3"                         | 4" | 6" |
| Lumens Range:           | < 700 - 1000 lm  | •     | •  | •  | •                   | •  | •                           | •  | •  | •   | •                          | •  | •  |
|                         | < 1001 - 2000 lm   | •     |    |    | •                   | •  | •                           | •  | •  | •   | •                          | •  | •  |
|                         | < 2001 - 4000 lm   |       | •  | •  | •                   | •  | •                           | •  | •  | •   | •                          | •  | •  |
|                         | < 4001 - 5000 lm   |       |    | •  | •                   | •  |                             |    |    |     |                            |    |    |
| Color Temperature:      | 2700K, 3000K, 3500K, 4000K                                     | •     | •  | •  | •                   | •  |                             |    |    |     | •                          | •  | •  |
|                         | Warm Dim   | •     | •  | •  | •                   | •  |                             |    |    |     | •                          | •  | •  |
|                         | Selectable<br>(CCT Shift: 2700K, 3000K, 3500K)                 |       |    |    |                     |    |                             |    |    |     |                            |    |    |
|                         | Selectable<br>(CCT Shift: 3000K, 3500K, 4000K)                 |       |    |    |                     |    | •                           | •  | •  | •   |                            |    |    |
| Voltage:                | 120V   | •     | •  | •  | •                   | •  | •                           | •  | •  | •   | •                          | •  | •  |
|                         | 120-277V   | •     |    |    | •                   | •  | •                           | •  | •  | •   | •                          | •  | •  |
|                         | 277V   |       |    |    |                     |    |                             |    |    |     |                            |    |    |
| Dimming:                | ELV  | •     | •  | •  | •                   | •  |                             |    |    |     | •                          | •  | •  |
|                         | TRIAC  | •     | •  | •  | •                   | •  |                             |    |    |     | •                          | •  | •  |
|                         | 0-10V  | •     | •  | •  | •                   | •  | •                           | •  | •  | •   | •                          | •  | •  |
|                         | Intelligent Drive (ELV, TRIAC, 0-10V)                          | •     | •  | •  | •                   | •  |                             |    |    |     | •                          | •  | •  |
|                         | Lutron   | •     | •  | •  | •                   | •  |                             |    |    |     | •                          | •  | •  |
|                         | eldoLED  | •     | •  | •  | •                   | •  |                             |    |    |     | •                          | •  | •  |
| Interchangeable Optics: | 12", 22", 27", 35", 45"<br>18", 30", 50", 80"<br>19", 38", 60" | •     | •  | •  | •                   | •  |                             |    |    |     |                            |    |    |
| Interchangeable Filter: | Frosted, Solite, Honey Comb and Linear filter                  | •     | •  | •  | •                   | •  |                             |    |    |     |                            |    |    |
| Housing Type:           | Non-IC New Construction  |       | •  | •  | •                   | •  | •                           | •  | •  | •   |                            |    |    |
|                         | IC New Construction  | •     | •  | •  |                     |    |                             |    |    |     | •                          | •  | •  |
|                         | Remodel  |       |    |    | •                   | •  |                             |    |    |     | •                          | •  | •  |
|                         | Retrofit   |       |    |    | •                   | •  |                             |    |    |     | •                          | •  | •  |
|                         | Fire Rated   |       |    |    |                     |    |                             |    |    |     | •                          | •  | •  |
|                         | Chicago Plenum   | •     |    |    |                     |    |                             |    |    |     |                            |    |    |
| Contour:                | Round  | •     | •  | •  | •                   | •  | •                           | •  | •  | •   | •                          | •  | •  |
|                         | Square   | •     | •  | •  |                     |    |                             |    |    |     | •                          | •  | •  |
| Flange/Flangeless Type  | Flange   | •     | •  | •  | •                   | •  | •                           | •  | •  | •   | •                          | •  | •  |
|                         | Flangeless Plaster   | •     | •  | •  |                     |    |                             |    |    |     |                            |    |    |
|                         | Flangeless Millwork  | •     | •  | •  |                     |    |                             |    |    |     |                            |    |    |
| Aperture Type:          | Downlight  | •     | •  | •  | •                   | •  | •                           | •  | •  | •   | •                          | •  | •  |
|                         | Wall Wash  | •     | •  | •  | •                   | •  |                             |    |    |     |                            |    |    |
|                         | Adjustable   | •     | •  | •  |                     |    |                             |    |    |     |                            | •  | •  |
| Frame Accessories:      | Adjustable bar hanger  | •     | •  | •  |                     |    |                             |    |    |     | •                          | •  | •  |
|                         | C Channel bar hanger   | •     | •  | •  | •                   | •  | •                           | •  | •  | •   |                            |    |    |
|                         | Flat bar hanger  | •     | •  | •  | •                   | •  | •                           | •  | •  | •   |                            |    |    |
|                         | Wood Joist   | •     | •  | •  | •                   | •  | •                           | •  | •  | •   |                            |    |    |
|                         |  |       |    |    | •                   | •  |                             |    |    |     |                            |    |    |
| Option:                 | Emergency Battery (integral swith)                             | •     | •  | •  | •                   | •  | •                           | •  | •  | •   | •                          | •  | •  |
|                         | Emergency Battery (remote swith)                               | •     | •  | •  | •                   | •  | •                           | •  | •  | •   |                            |    |    |
| Compliance:             | UL/CSA   | •     | •  | •  | •                   | •  | •                           | •  | •  | •   | •                          | •  | •  |
|                         | Energy Star  | •     | •  | •  | •                   | •  | •                           | •  | •  | •   | •                          | •  | •  |
|                         | Title 24 & JA8   | •     | •  | •  | •                   | •  | •                           | •  | •  | •   | •                          | •  | •  |

|                         |  | VERSATRIM |    |    | BUILDERS PLUS<br>RESIDENTIAL |    | SURFACE MOUNT |  | BUILDERS PLUS<br>SURFACE MOUNT |   |
|-------------------------|--|-----------|----|----|------------------------------|----|---------------|--|--------------------------------|---|
|                         |  | 3"        | 4" | 6" | 4"                           | 6" | 5/6"          |  | 8"                             |   |
| Lumens Range:           | < 700 - 1000 lm  | •         | •  | •  | •                            | •  | •             |  | •                              |   |
|                         | < 1001 - 2000 lm   |           | •  | •  |                              |    | •             |  | •                              |   |
|                         | < 2001 - 4000 lm   |           |    |    |                              |    |               |  |                                |   |
|                         | < 4001 - 5000 lm   |           |    |    |                              |    |               |  |                                |   |
| Color Temperature:      | 2700K, 3000K, 3500K, 4000K                                     | •         | •  | •  |                              |    |               |  |                                |   |
|                         | Warm Dim   |           | •  | •  |                              |    |               |  |                                |   |
|                         | Selectable<br>(CCT Shift: 2700K, 3000K, 3500K)                 |           |    |    | •                            | •  | •             |  | •                              |   |
|                         | Selectable<br>(CCT Shift: 3000K, 3500K, 4000K)                 |           |    |    |                              |    |               |  |                                |   |
| Voltage:                | 120V   | •         | •  | •  | •                            | •  | •             |  | •                              |   |
|                         | 120-277V   | •         |    |    |                              |    |               |  |                                |   |
|                         | 277V   |           |    |    |                              |    |               |  |                                | • |
| Dimming:                | ELV  | •         | •  | •  | •                            | •  | •             |  |                                |   |
|                         | TRIAC  | •         | •  | •  | •                            | •  | •             |  |                                |   |
|                         | 0-10V  | •         | •  | •  |                              |    |               |  |                                | • |
|                         | Intelligent Drive (ELV, TRIAC, 0-10V)                          |           |    |    |                              |    |               |  |                                |   |
|                         | Lutron   | •         | •  | •  |                              |    |               |  |                                |   |
|                         | eldoLED  | •         | •  | •  |                              |    |               |  |                                |   |
| Interchangeable Optics: | 12", 22", 27", 35", 45"<br>18", 30", 50", 80"<br>19", 38", 60" |           | •  | •  |                              |    |               |  |                                |   |
| Interchangeable Filter: | Frosted, Solite, Honey Comb and Linear filter                  |           | •  | •  |                              |    |               |  |                                |   |
| Housing Type:           | Non-IC New Construction  |           |    |    |                              |    |               |  |                                |   |
|                         | IC New Construction  | •         | •  | •  | •                            | •  |               |  |                                |   |
|                         | Remodel  | •         | •  | •  | •                            | •  |               |  |                                |   |
|                         | Retrofit   | •         | •  | •  | •                            | •  |               |  |                                |   |
|                         | Fire Rated   | •         | •  | •  |                              |    |               |  |                                |   |
|                         | J-Box  |           |    |    |                              |    | •             |  | •                              |   |
| Contour:                | Round  | •         | •  | •  | •                            | •  | •             |  | •                              |   |
|                         | Square   | •         | •  | •  | •                            | •  | •             |  |                                |   |
| Flange/Flangeless Type  | Flange   | •         | •  | •  | •                            | •  |               |  |                                |   |
|                         | Flangeless Plaster   |           |    |    |                              |    |               |  |                                |   |
|                         | Flangeless Millwork  |           |    |    |                              |    |               |  |                                |   |
| Aperture Type:          | Downlight  | •         | •  | •  | •                            | •  |               |  |                                |   |
|                         | Wall Wash  |           |    |    |                              |    |               |  |                                |   |
|                         | Adjustable   |           | •  | •  |                              |    |               |  |                                |   |
| Frame Accessories:      | Adjustable bar hanger  | •         | •  | •  |                              |    |               |  |                                |   |
|                         | C Channel bar hanger   |           |    |    |                              |    |               |  |                                |   |
|                         | Flat bar hanger  |           |    |    |                              |    |               |  |                                |   |
|                         | Wood Joist   |           |    |    |                              |    |               |  |                                |   |
|                         |  |           |    |    |                              |    |               |  |                                |   |
| Option:                 | Emergency Battery (integral swith)                             | •         | •  | •  |                              |    |               |  | •                              |   |
|                         | Emergency Battery (remote swith)                               | •         | •  | •  |                              |    |               |  |                                |   |
| Compliance:             | UL/CSA   | •         | •  | •  | •                            | •  | •             |  | •                              |   |
|                         | Energy Star  | •         | •  | •  |                              |    | •             |  | •                              |   |
|                         | Title 24 & JA8   | •         | •  | •  |                              |    | •             |  | •                              |   |